



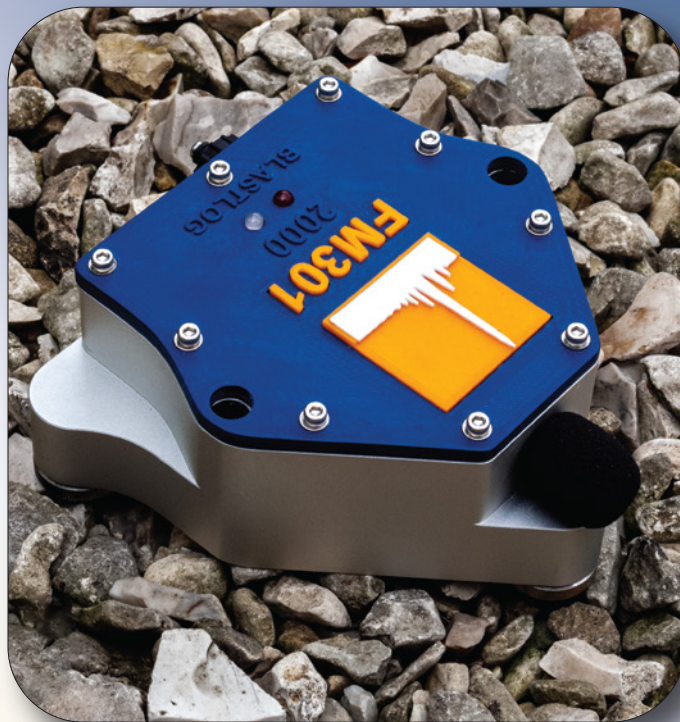
FM 301

BLASTING SEISMOGRAPH

Blast Log has developed a seismograph no larger than the size of hand.

KEY FEATURES

- Everything is in the unit
- Accelerometers and microphones are housed in the unit
- Micro-electro-mechanical systems (MEMS) based technology
- Integrated GPS, all recordings have a GPS time stamp
- Bluetooth capability allow users to control the unit and view a summary of the recordings via your mobile phone



SPECIFICATIONS

Accelerometers

Type: Tri-axial accelerometers

Vibration range: +/- 327mm/s (12.9 in/s)

Accelerometer ranges: 2g / 4g / 8g

Frequency range: 2.47 to 250 Hz (at 1 kHz sampling)

Response standard: ISEE Seismograph Specification

Microphone

Type: bi-directional, differential pressure transducer

Pressure range: 1000 Pa (154 dB(L))

Frequency range: 1 to 250 Hz

Response standard: ISEE Seismograph Specification

Other Key Specifications

Record Mode: Full waveform

Sample Rate: 1 kHz

Record time: 2s / 4s / 8s

Storage capacity: 1000 events (based on 1 kHz
sample rate with 4s record time)

PC interface: USB

CE certified

Seismic Trigger: From 0.1 mm/s (in 0.1 increments)

Acoustic trigger: 2 to 200 Pa (100 to 140 dB(L))

Dimensions: 16 x 13.8 x 5.5 cm (6.3 x 5.4 x 2.2 in)

Weight: 0.85 kg (1 lb 14 oz)

Battery: 3.7V rechargeable lithium-ion

Bluetooth Range: +/- 4m